

THE MASTER MAP OF FAT LOSS

THE FAT LOSS MAP

MOST PEOPLE **START HERE...**
AND NEVER SEE WHAT COMES NEXT.



FAT LOSS

THE ENTRY POINT



**FIRST-TIMER
EFFECT**

IT WORKS!
(FOR NOW)



**WEIGHT
REBOUND**

THE BODY
FIGHTS BACK



**CHRONIC
WEIGHT
CYCLING**

THE HARDER
IT GETS

SEE THE MAP. UNDERSTAND THE FORCES.
CHANGE THE OUTCOME.

Dear friend

You hold in your hands **the** single most important piece of information you will ever absorb in your entire life about weight loss, fat loss, and getting control over body fat.

Ironically, **nothing** in this short read has anything to do with how to lose fat!

Not one thing.

Instead, this is the missing part of the equation. This is the cycle no one ever told you about. This is the part **everyone** discovers the hard way, after thirty years of repeated attempts to get control over their body.

This is the **master map** of the big picture.

Over the last 10 years, several individuals have leveraged social media to gain fame and fortune in the weight loss space. These are people who wrote books. They told us what to do. They claimed to have the answer to the problem of weight. In a supreme irony, almost to a person, we are now watching in real time, these same individuals live out the very things you will discover in this brief read.

These experts are learning **the hard way**. They are slowly discovering there is big picture. That big picture of the weight loss journey illuminates several pitfalls that trap virtually everyone into the same outcome.

Not you.

Armed with what you will learn in this quick and simple read, you will avoid the inevitable outcome everyone else gets.

And you must. Body fat and weight are the foundational barrier to real health.

If you find the information in here helpful, even paradigm breaking, **share it!**

I have made this FREE for a reason. **Everyone needs the missing map.**

I'm very spot on with predictions. This **will** become common knowledge. The reason is its simply the real truth. Eventually, the truth always wins out. It's just a question of how fast. When you share this with family, friends and the people you care about, the simple ideas in here, in bold beautiful pictures, will enable them to also win the weight game over the long term.

EVERY JOURNEY NEEDS A MAP:

Every new journey begins with a map.

Maps keep us on course. They tell us what lies ahead, where to turn, and what to avoid.

Without a map you are bound to get lost.

You are on a health journey. It is perhaps one of the most important journeys of your life. It dictates what you can obtain from life. With great health, you have great freedom. With poor health you limit your options.

At the center of your health journey, for that matter, everyone's health journey, is an inevitable obstacle. Everyone **will** face it. In this age, almost no one overcomes it.

Every health journey faces the central problem of *weight and body fat*. The problem of weight and body fat has produced literally millions of pages written on the topic.

Embarissingly, nothing has been solved.

Every year, millions of people do the weight loss thing. Over time, almost to a person, the same picture emerges. It looks like this.

Initial success =>
Weight regain =>
More attempts =>
More success =>
Weight regain =>
Chronic weight cycling =>
Difficulty losing weight =>
Nothing seems to work =>
Weight loss drugs =>
Weight regain

This is the reality.

Despite the platitudes, despite the social media, despite what the influencers say, when we expand the timeline of observation, this is the result 95 percent or more of people will experience.

Truth.

At this point, the “experts” jump in. Platitudes ensue. Discipline, self control, habits, the usual suspects are called out. Literally, none of them understand there is an actual biology at work that is unacknowledged, yet easily and readily identified. And none whatsoever deal with the other very real elements you are now about to discover.

How is this possible?

How has an entire industry failed to deliver accurate information?

The answer has to do partly with what sells, partly with what we, the consumer, want others to hear, and partly with our collective love of the quick fix.

WHAT WE SEE VS WHAT REALLY HAPPENS:

On the opposing page you see the basic problem.

- We see someone go on a diet.
- They lose weight.
- Success!

They post about it, talk about it, write a book on it.

Here is the part no one ever writes about.

- We see someone go on a diet.
- They lose weight.
- They regain the weight.
- They repeat the process many times over.

Let's be completely real for a moment. **You know this is what really happens.**

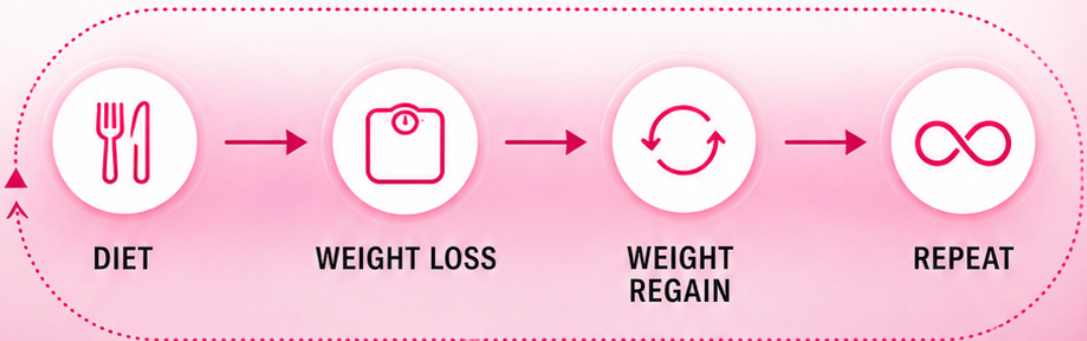
Here is the problem. When you begin a weight loss journey, you are entering a complete system. In that system for every action there is a reaction. For every reaction there are **consequences that accumulate!**

— THE MASTER MAP OF FAT LOSS —

MOST PEOPLE ONLY SEE THIS.



— BUT HERE'S WHAT ACTUALLY HAPPENS... —



PROBLEM: You're entering a system you were never shown.

THE 3 MASTER FORCES OF THE WEIGHT LOSS JOURNEY

Three very real, very powerful forces govern the weight loss journey. Outside of my work, you will find very little said about any of them, yet if you bring any of them up in a group of health coaches, they quickly acknowledge them.

These three forces govern the equation. They heavily influence the outcomes we empirically know to be true. Here they are.

THE VIRGIN FAT LOSS EFFECT - OR FIRST TIMERS SYNDROME:

Bodies new to fat loss tend to respond extremely well to losing weight. Any diet can work. Lots of strategies can work.

The First Time Effect is a major source of both diet confusion and chronic weight cycling.

Millions of dieters have been sucked into diet protocols that **cannot work long term**, simply because a first timer had great success with a given diet and wrote a book, in total ignorance of both The First Time Effect and the next major force, the Weight Rebound Effect.

THE WEIGHT REBOUND EFFECT:

I have written extensively about this in my books. Underpinning the weight rebound is a very real hard biology. It's easy to identify. Ironically, nearly zero "experts" on the subject are familiar with it or have a plan to counter it.

The weight rebound effect is **inevitable**.

It's hard wired survival biology. If you don't counter it, then it makes the final force inevitable.

CHRONIC WEIGHT CYCLING:

Losing weight, regaining it, and then repeating the cycle over and over is what most people experience.

Chronic weight cycling has a very high cost. Every weight loss journey is accumulating changes, often detrimental, to tissues and mechanisms that control food intake and body fat. Over time, it adds up and losing weight can become very difficult.

THE MASTER MAP OF FAT LOSS

3 FORCES

CONTROL THE ENTIRE JOURNEY

Every fat loss journey moves through **this landscape.**

01

FIRST-TIMER
EFFECT



THE ILLUSION OF
EASY WINS

High initial results
Motivates and misleads
Hides what's ahead

02

THE WEIGHT
REBOUND EFFECT



THE BODY
FIGHTS BACK

Biological defenses activate
Weight returns
Stronger than before

03

CHRONIC WEIGHT
CYCLING



THE CYCLE THAT
COMPOUNDS

Each cycle causes more damage
Results get harder
Health goes in the wrong direction



SEE THE MAP. UNDERSTAND THE FORCES.
CHANGE THE OUTCOME.

01 WHY THE FIRST TIME "WORKS"



High biological responsiveness



Flexible fat tissue
(low ECM resistance)



Adaptive immune state



Microbiome still responsive



The body is new to fat loss.
Any diet can work.



TISSUE IS YOUNG



INFLAMMATION IS LOW



CHANGE HAPPENS FAST

04 FIRST-TIMER EFFECT

PART 2



THE PROBLEM

FIRST-TIMERS SYNDROME TRICKS YOU INTO THINKING:

- ✓ You solved the problem
- ✓ You found the answer
- ✓ All you need is discipline



WHAT YOU MISS

- ✗ The weight rebound effect
- ✗ The start of chronic weight cycling

**THE PROBLEM ISN'T SOLVED.
IT COMPOUNDS.**



INSTEAD

UNDERSTAND THIS:

- ✓ The body is fresh
- ✓ It's not the diet — any diet can work



WHAT MATTERS:

- ✓ Offset the rebound
- ✓ Plan for real life
- ✓ Build maintenance from the start



**FIRST SUCCESS IS NOT THE SOLUTION.
IT'S THE FIRST STEP.**



Early success is a condition.



Chronic cycles start here.



Awareness changes everything.



Plan for real life.
Build for maintenance.

— THE MASTER MAP OF FAT LOSS —

02 WHAT FAT LOSS ACTUALLY DOES

**FAT LOSS IS
NOT NEUTRAL.**



Fat cells shrink.



Weight regain
biology activates.



Multiple mechanisms
work against you.



Fat loss is
interpreted as
STARVATION.

ECM BECOMES
RIGID

MECHANICAL
STRESS
INCREASES

SIGNALS
OF DISTRESS
FIRE

YOUR BODY DOESN'T SEE FAT LOSS AS SUCCESS.
IT SEES THREAT.

— THE MASTER MAP OF FAT LOSS —

03 WHY WEIGHT COMES BACK

WHAT'S HAPPENING UNDER THE SURFACE



ECM stiffening
(collagen, fibrosis)



The energy gap.



Macrophage shift
(inflammatory repair mode)



Hormonal shifts

WHAT YOU FEEL



Hunger goes up



Energy expenditure
goes down



Fat cells rapidly refill

STIFF, COMPRESSED
TISSUE ENVIRONMENT

INFLAMMATORY
SIGNALS ACTIVE

IMMUNE CELLS
ON HIGH ALERT



Your body is
repairing what it thinks was damage.



It's not failure.
It's biology.



The body is trying
to protect you.

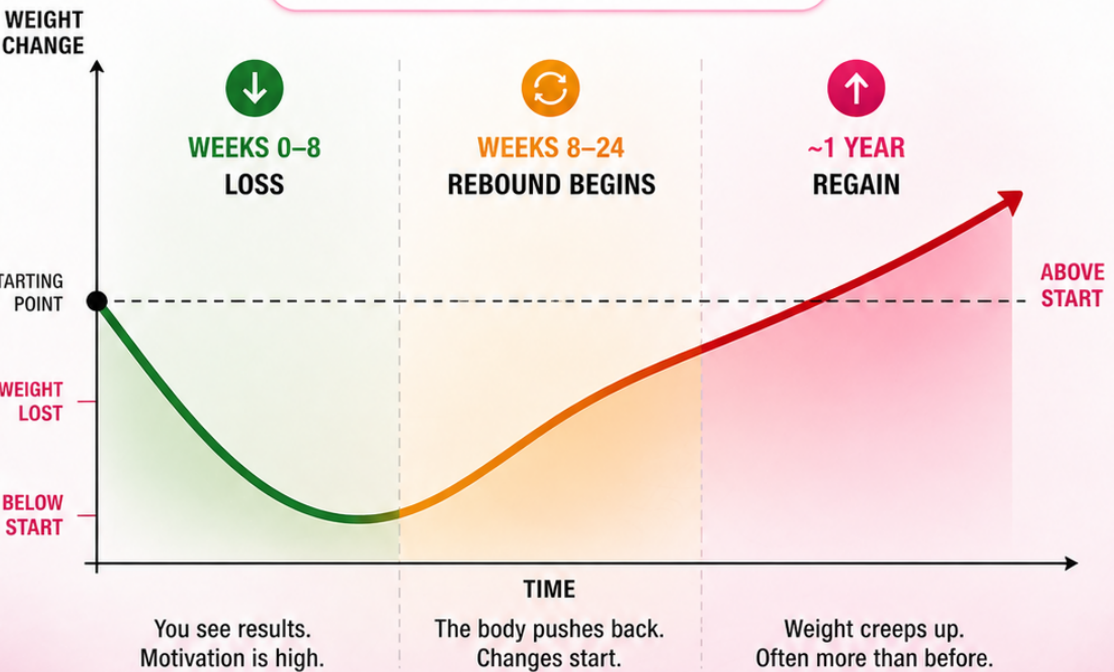


Rebound is the
plan, not the glitch.

04 THE PATTERN MOST PEOPLE MISS



Looks like success...
until you zoom out.



SHORT TERM: IT WORKS.
LONG TERM: YOUR BODY ADAPTS.



Fat loss is temporary.



Adaptation is inevitable.



The pattern repeats until you break it.

05 WITH REPEATED FAT LOSS CYCLES...



Stiffer collagens
deposit into the ECM



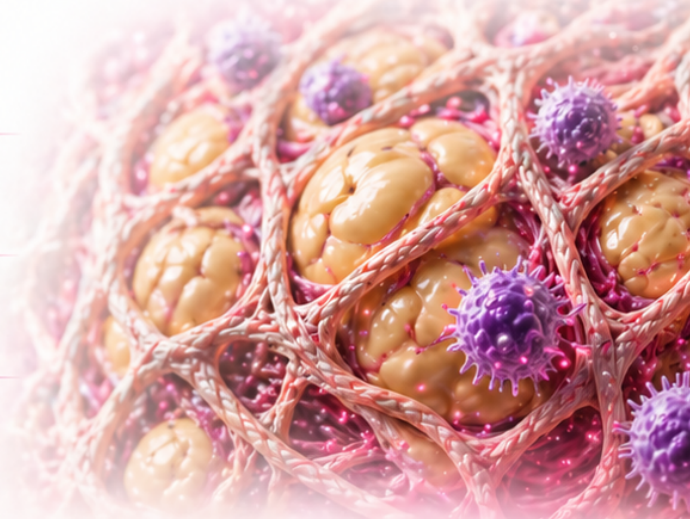
They act like
inflammatory beacons



Food reward
synapses multiply

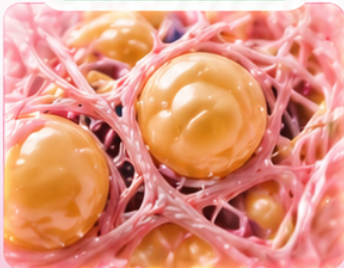


Metabolic flexibility
declines



THE TISSUE CHANGES. THE BODY REMEMBERS.

SOFT & RESILIENT



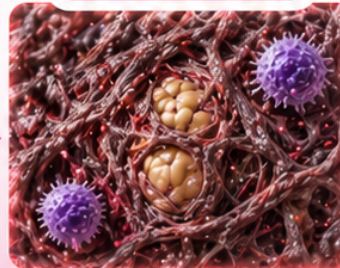
Healthy ECM.
Responsive. Adaptable.

STIFF & REACTIVE



Collagen builds up.
Inflammation increases.

RIGID & SCARRED



Scar tissue accumulates.
Function declines.



Fat loss becomes
harder and harder over time.



Each cycle
leaves a mark.



Your body adapts
to protect itself.



More cycles.
More resistance.

THE MASTER MAP OF FAT LOSS

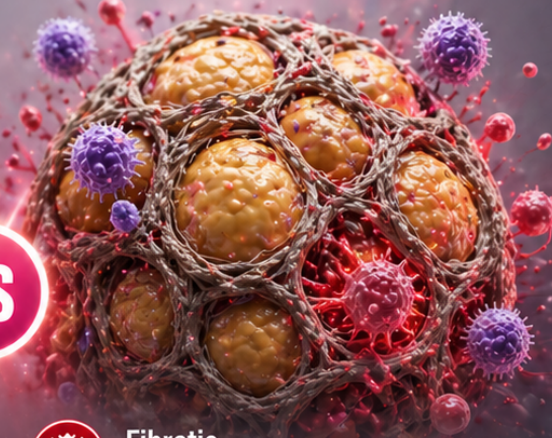
06 NOT ALL FAT IS THE SAME

YOUNG FAT



VS

OLD FAT



Flexible
Soft, pliable ECM



Immune balanced
Low inflammation



Metabolically responsive
Adapts easily



Fibrotic
Stiff, dense ECM



Inflamed
Chronic immune activation



Resistant
Metabolically inflexible



**Fat loss often sets off weight cycling.
Over time weight cycling ages fat.**



Cycle after cycle
changes the tissue.



What was once
flexible becomes rigid.



Adaptation today.
Resistance tomorrow.

THE MASTER MAP OF FAT LOSS

07 THE REAL ORDER OF OPERATIONS

A SYSTEM FIRST. FAT LOSS LASTS.



MOST PEOPLE START AT STEP 5.



Skipping the foundation leads to weight cycling.



Build the system first. Fat loss lasts.



Heal. Build. Then reduce.



Results that last come from the right order.



Patience today. Freedom tomorrow.

08 THE STRATEGY SHIFT FROM DIETING → TO SIGNALING

OLD MODEL



CALORIES



RESTRICTION



DAILY
REPETITION

VS

NEW MODEL



SIGNALS →
OUTCOMES



TIMING →
SENSITIVITY



RHYTHMS →
BIOLOGY



**DAILY BLUNTS.
RHYTHMS RESTORE.**



Old model fights
the body.



New model
works with
biology.



Less
force.
More flow.



Better
results.
Lasting change.

09

REALITY REQUIRES THIS:

Real life breaks the body.
We must account for the **7 day cycle**.



TIME GOES TO ZERO

- Busy schedule
- No extra bandwidth
- The plan has to fit real life



EATING OUT

- Social meals
- Travel
- Imperfect inputs



THE WEEKEND EFFECT

- 2 days can undo 5
- Weight spikes
- Momentum breaks



THE 7-DAY CYCLE

- Biology runs in rhythms
- Behavior repeats weekly
- Outcomes follow patterns



AGING NEVER STOPS

- Recovery slows
- Fat becomes more resistant
- Margin for error shrinks



IF YOUR SYSTEM DOESN'T
ACCOUNT FOR REAL LIFE...
IT BREAKS IN REAL LIFE.



09

HOW WE GET THERE - THE WAY

THE WAY



Build the right biology first.

Protect and optimize 4 core systems.

Reduce fat at the right time.

Maintain under real world conditions.

Stay flexible. Stay in your range.

Get better with age.

4 MUST-HAVE MECHANISMS



INSULIN OPTIMIZATION

- Stable blood sugar
- Lower insulin levels
- Better fat storage control
- More metabolic flexibility



MICROBIOME OPTIMIZATION

- Diverse, resilient flora
- Strong gut barrier
- Lower inflammation
- Better nutrient signaling



CARDIOVASCULAR HEALTH

- Strong heart & vessels
- Better circulation
- Lower blood pressure
- More energy & longevity



IMMUNE SYSTEM BALANCE

- Lower chronic inflammation
- Smarter immune response
- Less tissue damage
- Faster recovery



**THE OUTCOME:
A BODY THAT STAYS IN BALANCE.
IN ANY ENVIRONMENT.**



SUSTAINABLE
FAT LOSS



EFFORTLESS
MAINTENANCE



ENERGY
AND VITALITY



AGING
SLOWER



FREEDOM
FOR LIFE

— THE MASTER MAP OF FAT LOSS —

10 THE MAP CHANGES EVERYTHING

ONCE YOU SEE IT
YOU DON'T START THE SAME WAY



→ LEARN THE SYSTEM



→ START WITH THE GUT RESET



→ ENTER THE WAY



6. THE WAY



5. AVOID WEIGHT CYCLING



4. OFFSET THE REBOUND



3. SIGNAL FOR FAT LOSS



2. RESET THE GUT



1. AVOID FIRST TIMERS



**A CLEAR PATH.
A BETTER OUTCOME.**

- ✓ Right signals.
- ✓ Right timing.
- ✓ Right results.



**SUSTAINABLE
FOR LIFE**



Stop guessing.
Start guiding.



Work with
your biology.



Better results.
That last.



A system.
You can trust.